



National Flag
Branding & Event Solutions

SIGNATURE COLLECTION

INDEX



Formal Jackets & Waistcoats Pg 3

Trousers, Slacks & Skirts Pg 13

Lounge Shirts & Blouses Pg 25

Casual Jackets Pg 32

Chinos & Denims Pg 36

Accessories Pg 42

Branding Information Pg 46

Sizing Information Pg 48



JACKETS & WAISTCOATS



SLIM FIT

MEN'S ASHWORTH JACKET

POLYESTER RAYON SPANDEX



FEATURES:

- Slim Fit
- Top Welt
- Two Straight Side Pockets With Flaps
- Notch Lapel
- Two Buttons, Bone Buttons
- Centre Vent
- Polyester Rayon Spandex
- Size: 34 - 50

COLOUR OPTIONS:





REGULAR FIT

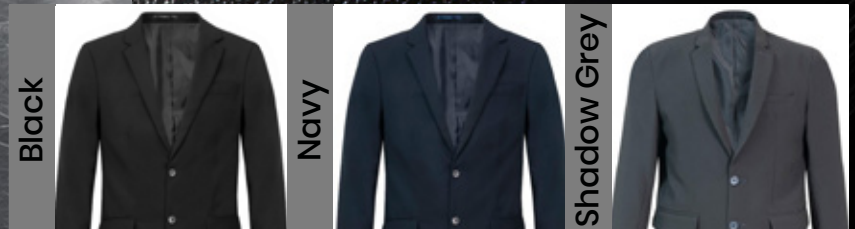
MEN'S LIAM JACKET

DURATOUGH



- FEATURES:**
- Regular Fit
 - Top Welt
 - Two Straight Side Pockets With Flaps
 - Notch Lapel
 - Two Buttons, Bone Buttons
 - Centre Vent
 - Duratouch
 - Size: 34-52

COLOUR OPTIONS:





SLIM FIT

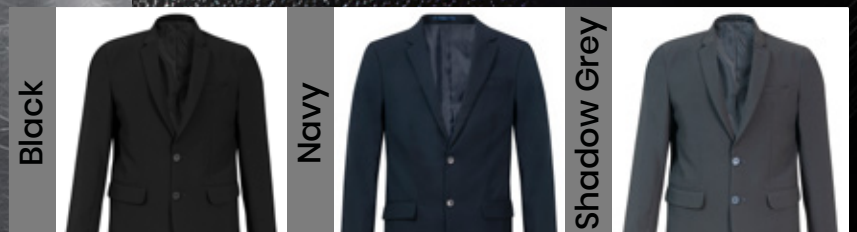
MEN'S WELLINGTON JACKET

DURATOUGH



- FEATURES:**
- Slim Fit
 - Top Welt
 - Two Straight Side Pockets With Flaps
 - Notch Lapel
 - Two Buttons, Bone Buttons
 - Centre Vent
 - Duratouch
 - Size: 34 - 50

COLOUR OPTIONS:





REGULAR FIT

MEN'S WINDSOR JACKET

100% POLYESTER



FEATURES:

- Regular Fit
- Top Welt
- Two Straight Side Pockets With Flaps
- Notch Lapel
- Two Buttons, Bone Buttons
- Centre Vent
- 100% Polyester
- Size: 34 - 60

COLOUR OPTIONS:





REGULAR FIT

MEN'S BALMORAL BLAZER

100% POLYESTER



- FEATURES:**
- Regular Fit
 - Three Patch Pockets
 - Notch Lapel
 - Two Buttons, Silver Shank Buttons
 - Centre Vent
 - 100% Polyester
 - Size: 34 - 60

COLOUR OPTIONS:



REGULAR FIT

LADIES' ELEANOR JACKET

DURATOUGH



FEATURES:

- Regular Fit
- Top Welt
- Two Straight Side Pockets With Flaps
- Notch Lapel
- Two Buttons, Bone Buttons
- Centre Vent
- Duratouch
- Size: 28 - 54

COLOUR OPTIONS:

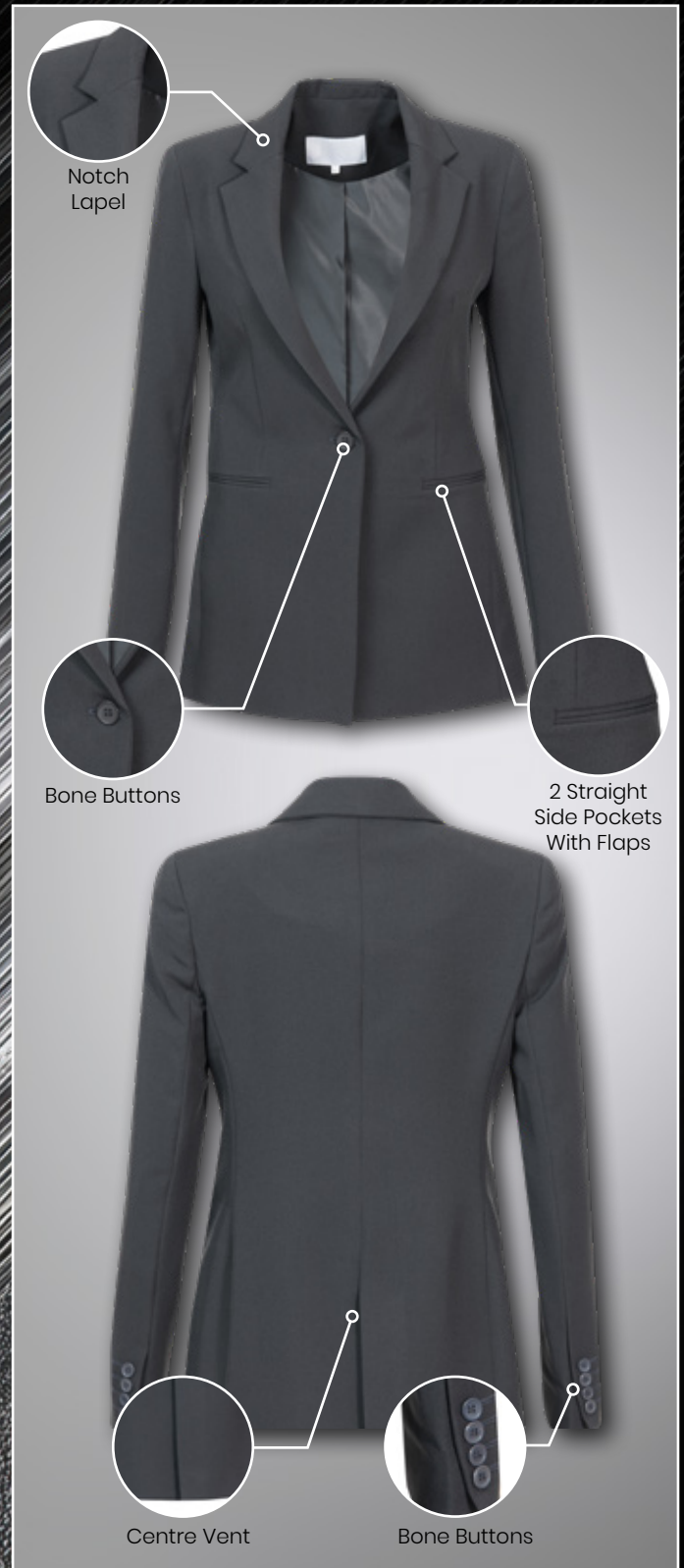




SLIM FIT

LADIES' ARABELLA JACKET

DURATOUGH



FEATURES:

- Slim Fit
- Two Straight Jet Pockets
- Notch Lapel
- Button One, Bone Buttons
- Centre Vent
- Duratouch
- Size: 28 - 54

COLOUR OPTIONS:





REGULAR FIT

MEN'S DURHAM WAISTCOAT

DURATOUGH

- FEATURES:**
- Regular Fit
 - Top Welt, Two Side Welted Mock Pockets
 - Bone Buttons
 - Adjustable Back Buckle
 - Duratouch
 - S - 5XL

COLOUR OPTIONS:





REGULAR FIT

MEN'S LEEDS WAISTCOAT

100% POLYESTER

FEATURES:

- Regular Fit
- Top Welt, Two Side Welted Mock Pockets
- Bone Buttons
- Adjustable Back Buckle
- 100% Polyester
- S - 5XL

COLOUR OPTIONS:



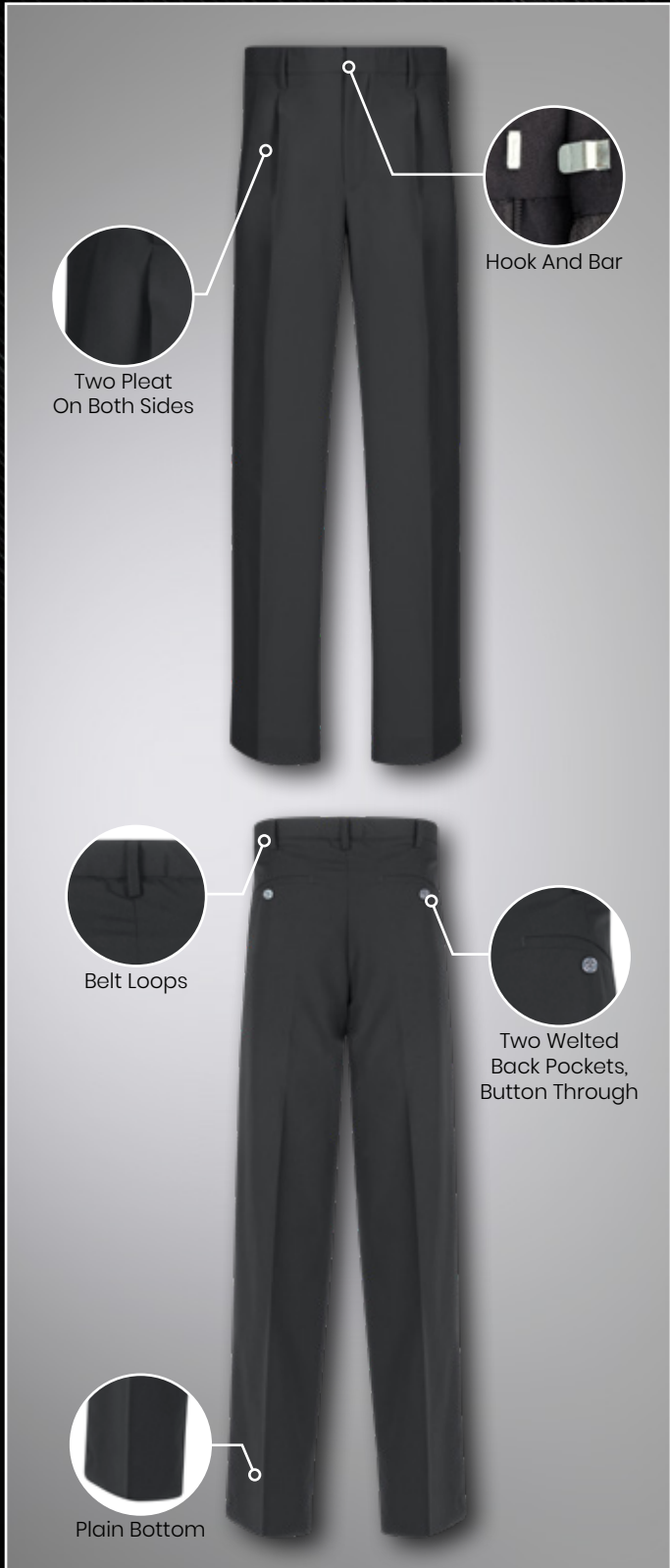


TROUSERS, SLACKS & SKIRTS



MEN'S YORK TROUSER

DURATOUGH



COLOUR OPTIONS:



FEATURES:

- Regular Fit
- Two Pleat
- Regular Waistband With Hook And Bar
- Two Welled Back Pockets Button Through
- Plain Bottom
- Duratouch
- Size: 28 - 52

MEN'S STANWICK TROUSER

DURATOUGH



COLOUR OPTIONS:



SLIM FIT

- FEATURES:**
- Slim Fit
 - Flat Front
 - Extended Waistband, Button Through With Hook And Bar
 - Two Welled Back Pockets Button Through
 - Plain Bottom
 - Duratouch
 - Size: 28 - 50

MEN'S LINCOLN TROUSER

100% POLYESTER



COLOUR OPTIONS:



REGULAR FIT

- FEATURES:**
- Regular Fit
 - Two Pleat
 - 7cm Belt Loops
 - Regular Waistband With Hook And Bar
 - Two Welled Back Pockets Button Through
 - Plain Bottom
 - 100% Polyester
 - Size: 28 - 54

MEN'S ALDERTON TROUSER

100% POLYESTER



COLOUR OPTIONS:



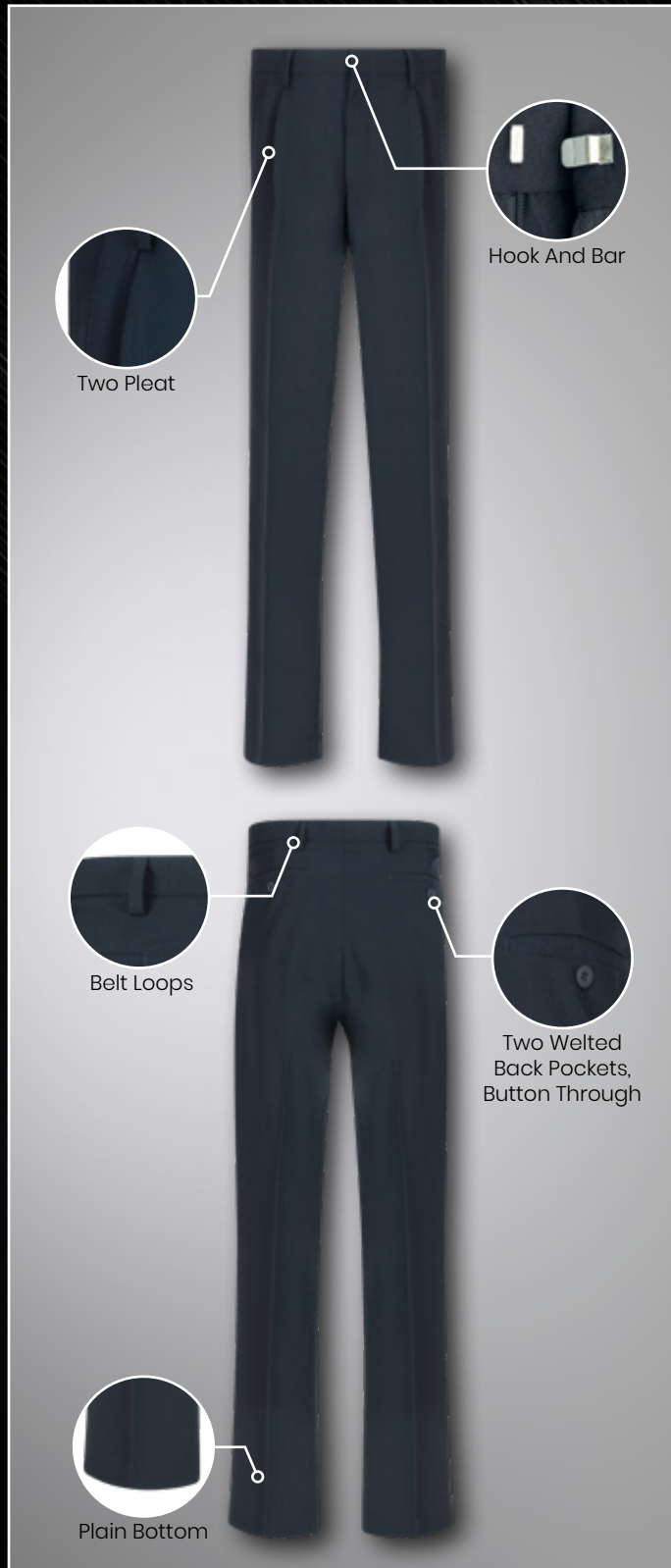
REGULAR FIT

- FEATURES:**
- Regular Fit
 - Two Pleat
 - Regular Waistband With Hook And Bar
 - Two Welled Back Pockets, Button Through
 - Plain Bottom
 - 100% Polyester
 - Size: 28 - 52

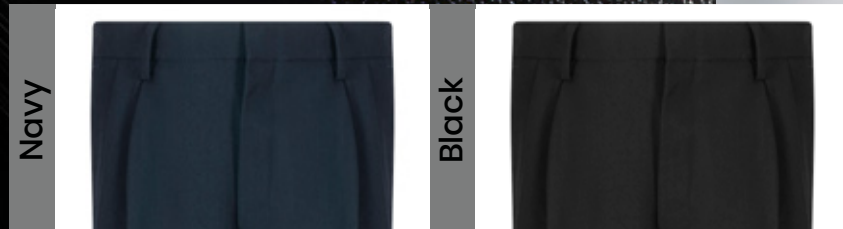


MEN'S HARGREAVES TROUSER

100% POLYESTER



COLOUR OPTIONS:

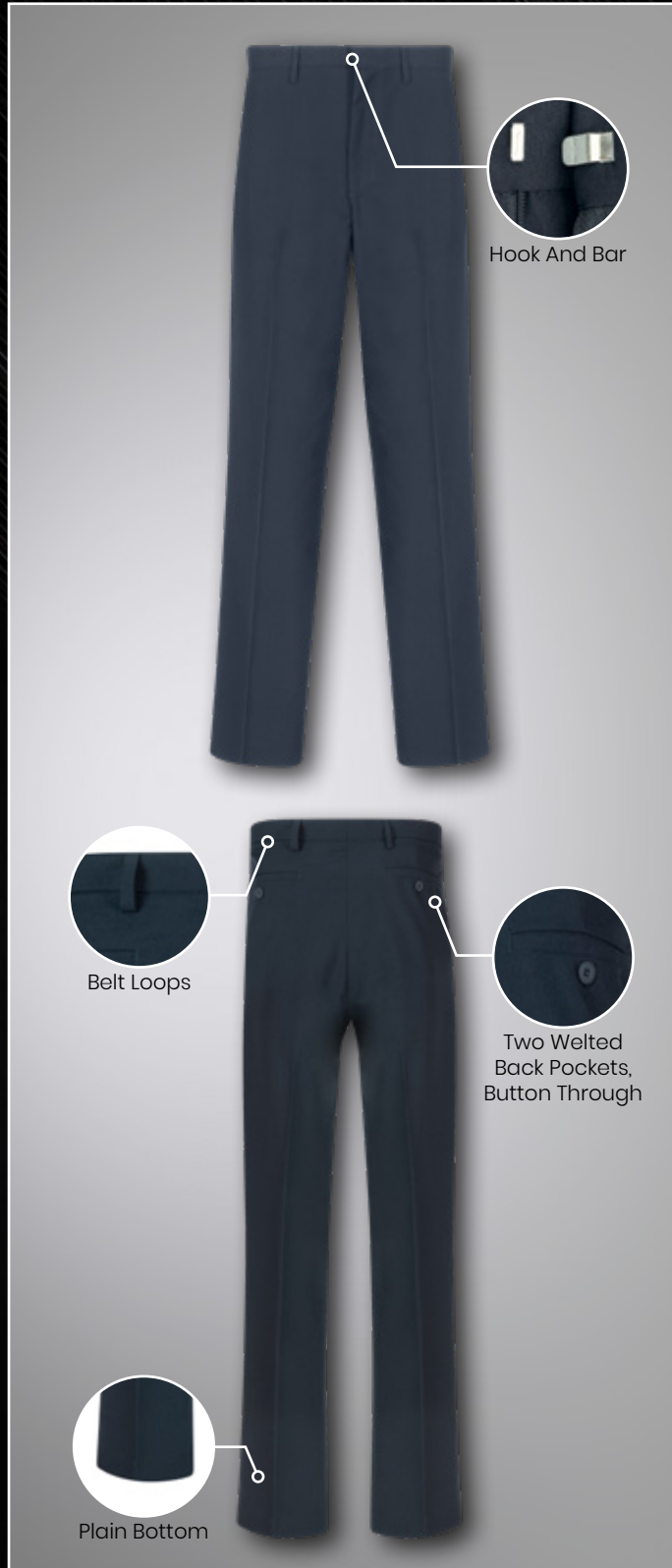


REGULAR FIT

- FEATURES:**
- Regular Fit
 - Two Pleat
 - Regular Waistband With Hook And Bar
 - Two Welled Back Pockets, Button Through
 - Plain Bottom
 - Flat Packed
 - 100% Polyester
 - Size: 28 - 52

MEN'S WENTWORTH TROUSER

100% POLYESTER



COLOUR OPTIONS:



REGULAR FIT

- FEATURES:**
- Regular Fit
 - Flat Front
 - Regular Waistband With Hook And Bar
 - Two Welled Back Pockets Button Through
 - Plain Bottom
 - Flat Packed
 - 100% Polyester
 - Size: 28 - 50

LADIES' LEONORA SLACKS

DURATOUGH



COLOUR OPTIONS:



REGULAR FIT

- FEATURES:**
- Regular Fit
 - Regular Waistband With Front Button Through
 - Front Zip And Regular Belt Loops
 - Two Slant Side Pockets
 - Plain Bottom
 - Duratouch
 - Size: 28 - 44

LADIES' CELIA SLACKS

DURATOUGH



COLOUR OPTIONS:



FEATURES:

- Regular Fit
- Half Elasticated Waistband , Pull On
- Two Slant Side Pockets
- Plain Bottom
- Duratouch
- Size: 34 -52

LADIES' VIOLET SLACKS

DURATOUGH



SLIM FIT

FEATURES:

- Slim Fit
- Regular Waistband With Front Button Through
- Front Zip And Regular Belt Loops
- Two Slant Side Pockets
- Plain Bottom
- Duratouch
- Size: 28 - 50

COLOUR OPTIONS:



LADIES' EDITH SKIRT

DURATOUGH



Regular
Waistband With
Back Button
Through



SLIM FIT

COLOUR OPTIONS:

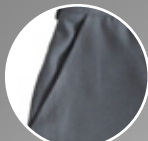


FEATURES:

- Slim Fit
- Regular Waistband With Back Button Through
- Back Zip
- Fully Lined
- Duratouch
- Size: 28 - 44

LADIES' HARRIET SKIRT

DURATOUGH



Slant Side Pockets



Quarter Elasticated Waist



Regular Waistband With Back Button Through



REGULAR FIT

COLOUR OPTIONS:



Navy

Black

Grey

FEATURES:

- Regular Fit
- Quarter Elasticated Waist
- Back Zip
- Regular Belt Loops
- Two Slant Side Pockets
- Fully Lined
- Duratouch
- Size: 34 - 52



LOUNGE SHIRTS & BLOUSES



**MEN'S
FREDERICK
LOUNGE SHIRT**
POLY COTTON

Black



Royal Blue



Sky Blue



White

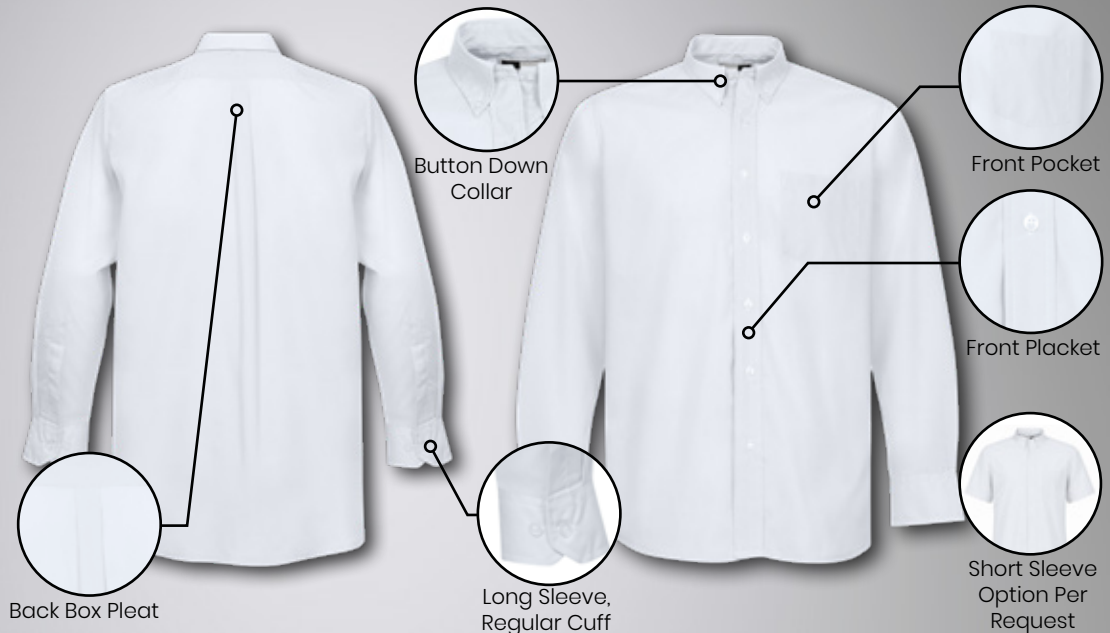


COLOUR OPTIONS:

FEATURES:

- Regular Fit
- Long Sleeve, Regular Cuff
- Button Down Collar
- Front Placket And Front Pocket
- Back Box Pleat
- Poly Cotton
- Size: S - 5XL

REGULAR FIT





FEATURES:

- Regular Fit
- Long Sleeve, Regular Cuff
- Regular Collar
- Front Placket And Front Pocket
- Back Box Pleat
- Poly Cotton
- Size: XS - 5XL



**MEN'S
NIMROD
LOUNGE SHIRT**
POLY COTTON

Black



French Blue



White



COLOUR OPTIONS:



**MEN'S
PENN
LOUNGE SHIRT**
POLY COTTON (CANDY STRIPE)

Royal Blue



Sky Blue



Black



Red



COLOUR OPTIONS:

FEATURES:

- Regular Fit
- Long Sleeve, Regular Cuff
- Semi Cut Away Collar
- French Front And Front Pocket
- Poly Cotton (Candy Stripe)
- Size: XS - 5XL

REGULAR FIT





FEATURES:

- Regular Fit
- Long Sleeve, Regular Cuff
- Regular Collar
- Front Placket
- Front And Back Darts
- Poly Cotton
- Size: 34 - 54

REGULAR FIT

**LADIES
IVY
BLOUSE**
POLY COTTON

Sky Blue



White



COLOUR OPTIONS:

Black



LADIES IRIS BLOUSE

POLY COTTON (CANDY STRIPE)

Red



Black



Royal Blue



COLOUR OPTIONS:

FEATURES:

- Regular Fit
- Long Sleeve, Regular Cuff
- Regular Collar
- Front Placket
- Front And Back Darts
- Poly Cotton (Candy Stripe)
- Size: 34 - 52

REGULAR FIT





FEATURES:

- Slim Fit
- Long Sleeve, Regular Cuff
- Regular Collar
- French Front
- Side Panels
- Poly Cotton
- Size: 34 - 52



LADIES
ALICE
BLOUSE
 POLY COTTON

Black



Sky Blue



White



COLOUR OPTIONS:





CASUAL JACKETS



MEN'S
CHATSWORTH
CASUAL JACKET
DURATOUGH

REGULAR FIT



Navy



Black



COLOUR OPTIONS:

Shadow Grey



FEATURES:

- Regular Fit
- Two Weltd Side Entry Pockets
- Regular Collar And Metal Zip Front
- Waistband Hem
- Button Through Cuff
- Duratouch
- Size: XS - 5XL



MEN'S CLIVE SOFTSHELL

Grey



Navy



Black



REGULAR FIT

FEATURES:

- Regular Fit
- Long Sleeve, Velcro Cuff
- Zip Front With Two Zipped Side Pockets
- Inner Pocket
- Front Yoke
- Hem Draw
- Softshell
- Size: XS - 6XL



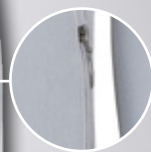
Front Yoke



Zip Front



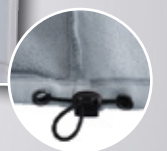
Inner Pocket



Two Zipped Side Pockets



Velcro Cuff



Hem Draw

COLOUR OPTIONS:

MEN'S
COLIN
BODYWARMER
SOFTSHELL

Black



Navy



REGULAR FIT

FEATURES:

- Regular Fit
- Sleeveless
- Zip Front
- Two Zipped Side Pockets
- Front Yoke
- Hem Draw
- Softshell
- Size: XS - 5XL



Front Yoke



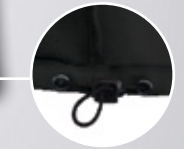
Back Yoke



Zip Front



Two Zipped Side Pockets



Hem Draw

COLOUR OPTIONS:

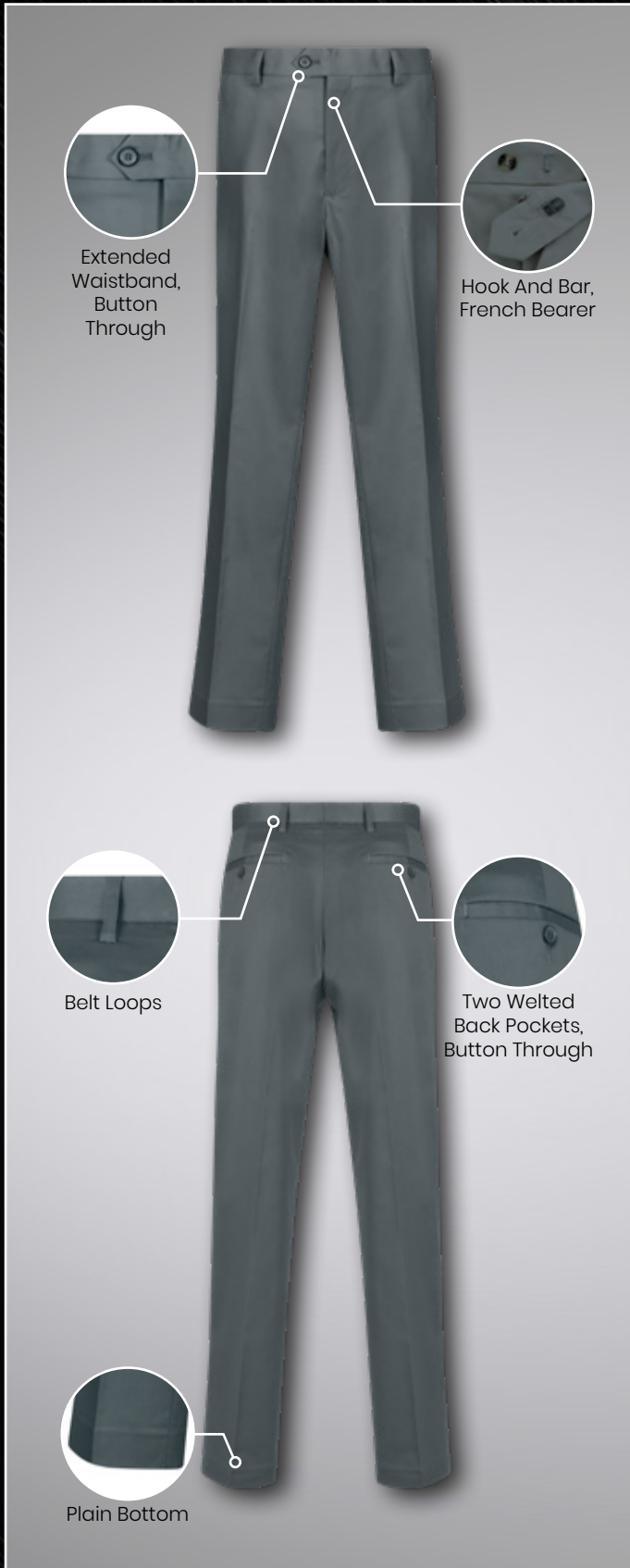


CHINOS & DENIMS



MEN'S ETON CHINO

POLY COTTON SPANDEX



**ULTRA
SLIM FIT**

- FEATURES:**
- Ultra Slim Fit
 - Flat Front
 - Extended Waistband, Button Through
 - Hook And Bar
 - French Bearer
 - Two Welled Back Pockets
 - Button Through
 - Plain Bottom
 - Flat Packed
 - Poly Cotton Spandex
 - Size: 28 - 50

COLOUR OPTIONS:



MEN'S HARROW CHINO

POLY COTTON



COLOUR OPTIONS:

Navy



Khaki



MEN'S PERCY

STRETCH DENIM



REGULAR FIT

FEATURES:

- Regular Fit
- Full Length, Straight Leg
- Mid-Rise
- Five-Pocket
- Coin Pocket
- Button And Zip Closure
- Stretch Denim
- Size: 28 - 48

COLOUR OPTIONS:

Blue



5th Pocket
(Coin Pocket)



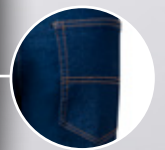
Two Front
Pockets
(5 Pockets)



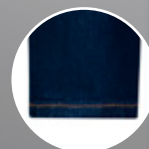
Button And
Zip Closure



Belt Loops



Two Back
Pockets
(5 Pockets)



Plain Bottom



MEN'S COLT

100% COTTON

REGULAR FIT

FEATURES:

- Regular Fit
- Twelve Ounce Denim
- Five Pocket Jean
- Coin Pocket
- Button And Zip Closure
- 100% Cotton
- Size: 28 - 52

COLOUR OPTIONS:



LADIES' DARLENE

STRETCH DENIM



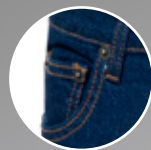
**TAPERED
FIT**

FEATURES:

- Tapered Fit
- Full Length, Slim Leg
- Five Pocket
- Coin Pocket
- Mid-Rise
- Button and zip closure
- Size: 28 - 48

COLOUR OPTIONS:

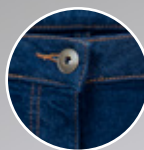
Blue



5th Pocket
(Coin Pocket)



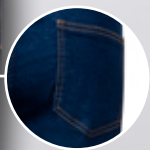
Two Front
Pockets
(5 Pockets)



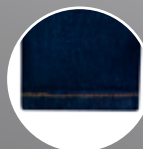
Button And
Zip Closure



Belt Loops



Two Back
Pockets
(5 Pockets)



Plain Bottom



ACCESSORIES



BANCROFT TIE

100% POLYESTER SATIN



FEATURES:

- Surface Interest
- 100% Polyester Satin
- Size: 7cm

Maroon



Black



CLIFFORD TIE

100% POLYESTER SATIN



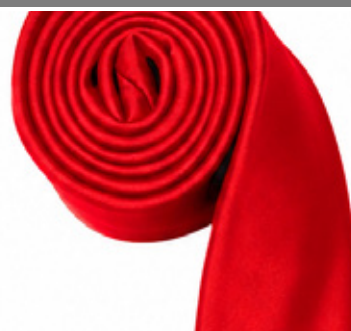
FEATURES:

- Satin Finish Tie
- 100% Polyester Satin
- Size: 7cm
- (Black: 6cm Option)

Black



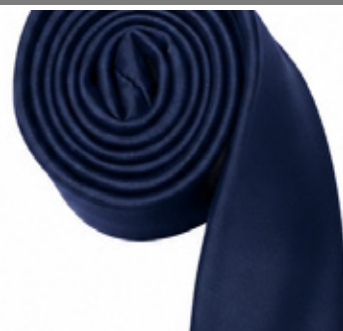
Red



Maroon



Navy



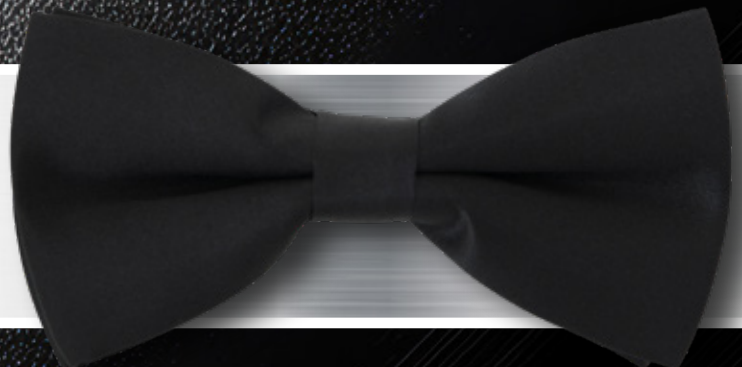
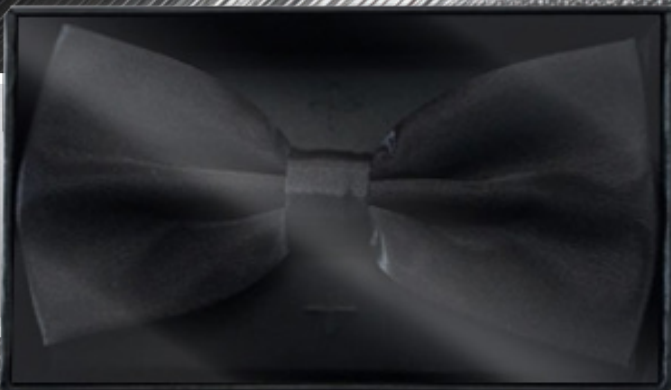
MAURICE BOW TIE

SATIN



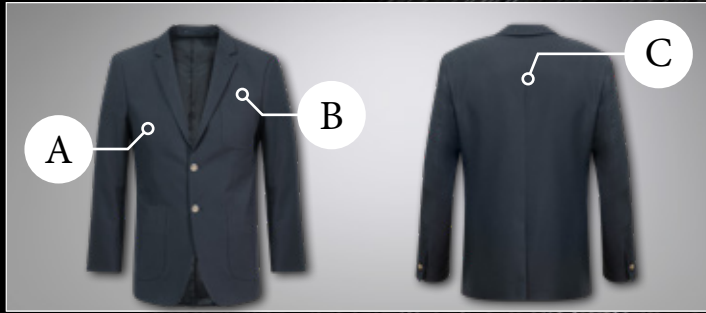
FEATURES:

- Satin Finished Bow Tie
- Adjustable Bow Tie
- Polyester Satin



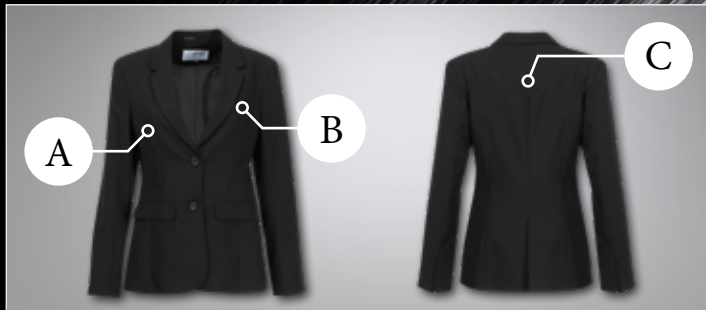
BRANDING METHODS & POSITIONS

MENS JACKETS & BLAZERS



BRANDING POSITION	BRANDING METHOD	
A	RIGHT CHEST	EMBROIDERY
B	ABOVE LEFT POCKET	EMBROIDERY
C	BACK Yoke	EMBROIDERY

LADIES ELEANOR JACKET



BRANDING POSITION	BRANDING METHOD	
A	RIGHT CHEST	EMBROIDERY
B	ABOVE LEFT POCKET	EMBROIDERY
C	BACK Yoke	EMBROIDERY

LADIES ARABELLA JACKET



BRANDING POSITION	BRANDING METHOD	
A	RIGHT CHEST	EMBROIDERY
B	LEFT CHEST	EMBROIDERY
C	BACK Yoke	EMBROIDERY

MENS WAISTCOATS



BRANDING POSITION	BRANDING METHOD	
A	RIGHT CHEST	EMBROIDERY
B	ABOVE LEFT POCKET	EMBROIDERY
C	BACK Yoke	EMBROIDERY

BRANDING METHODS & POSITIONS

MENS LOUNGE SHIRTS



BRANDING POSITION		BRANDING METHOD	
A	RIGHT SLEEVE	EMBROIDERY	
B	RIGHT CHEST	EMBROIDERY	
C	LEFT SLEEVE	EMBROIDERY	
D	ABOVE LEFT POCKET	EMBROIDERY	
E	BACK Yoke	EMBROIDERY	

LADIES BLOUSES



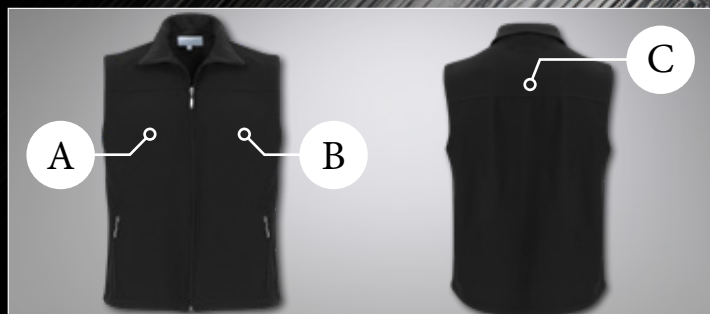
BRANDING POSITION		BRANDING METHOD	
A	RIGHT SLEEVE	EMBROIDERY	
B	RIGHT CHEST	EMBROIDERY	
C	LEFT SLEEVE	EMBROIDERY	
D	LEFT CHEST	EMBROIDERY	
E	BACK Yoke	EMBROIDERY	

MENS CASUAL JACKETS



BRANDING POSITION		BRANDING METHOD	
A	RIGHT SLEEVE	EMBROIDERY	DTF
B	RIGHT CHEST	EMBROIDERY	DTF
C	LEFT SLEEVE	EMBROIDERY	DTF
D	LEFT CHEST	EMBROIDERY	DTF
E	BACK Yoke	EMBROIDERY	DTF

MENS BODYWARMER



BRANDING POSITION		BRANDING METHOD	
A	RIGHT CHEST	EMBROIDERY	DTF
B	LEFT CHEST	EMBROIDERY	DTF
C	BACK Yoke	EMBROIDERY	DTF

SIZING CHARTS

MENS JACKETS AND BLAZERS

PRODUCT NAME	MEASUREMENT POSITION	28	30	32	34	36	38	40	42	44	46	48	50	52	54	56	58	60
ASHWORTH JACKET	HALF CHEST				46.0	48.5	51.0	53.5	56.0	58.5	61.0	63.5	66.0					
	HALF WAIST 17cm BELOW ARM HOLE				42.0	44.5	47.0	49.5	52.0	54.5	57.0	59.5	62.0					
WELLINGTON JACKET	HALF CHEST				46.0	48.5	51.0	53.5	56.0	58.5	61.0	63.5	66.0					
	HALF WAIST 17cm BELOW ARM HOLE				42.0	44.5	47.0	49.5	52.0	54.5	57.0	59.5	62.0					
WINDSOR JACKET	HALF CHEST				49.0	51.5	54.0	56.5	59.0	61.5	64.0	66.5	69.0	71.5	74.0	76.5	79.0	81.5
	HALF WAIST 17cm BELOW ARM HOLE				44.5	47.0	49.5	52.0	54.5	57.0	59.5	62.0	64.5	67.0	69.5	72.0	74.5	77.0
BALMORAL JACKET	HALF CHEST				49.0	51.5	54.0	56.5	59.0	61.5	64.0	66.5	69.0	71.5	74.0	76.5	79.0	81.5
	HALF WAIST 17cm BELOW ARM HOLE				44.5	47.0	49.5	52.0	54.5	57.0	59.5	62.0	64.5	67.0	69.5	72.0	74.5	77.0
LIAM JACKET	HALF CHEST				49.0	51.5	54.0	56.5	59.0	61.5	64.0	66.5	69.0	71.5				
	HALF WAIST 17cm BELOW ARM HOLE				44.5	47.0	49.5	52.0	54.5	57.0	59.5	62.0	64.5	67.0				

LADIES JACKETS

PRODUCT NAME	MEASUREMENT POSITION	28	30	32	34	36	38	40	42	44	46	48	50	52	54	56	58	60
ELEANOR JACKET	HALF CHEST	44.5	46.5	48.5	50.5	53.0	55.5	58.5	61.5	64.5	67.5	70.5	73.5					
	HALF WAIST	35.0	37.0	39.0	41.0	43.5	45.5	48.5	51.5	54.5	57.5	60.5	63.5					
ARABELLA JACKET	HALF CHEST	40.0	42.0	44.0	46.0	48.0	50.0	53.0	56.0	59.0	62.0	65.0	73.0	76.0	79.0			
	HALF WAIST	38.0	40.0	42.0	44.0	46.5	49.0	52.0	55.0	58.0	61.0	64.0	67.0	70.0	73.0			

MENS WAISTCOATS

PRODUCT NAME	MEASUREMENT POSITION	XS	S	M	L	XL	2 XL	3 XL	4 XL	5 XL							
LEEDS WAISTCOAT	HALF CHEST		45.0	47.5	50.0	52.5	55.0	57.5	60.0	62.5							
	HALF HEM		42.5	45.0	47.5	50.0	52.5	55.0	57.5	60.0							
DURHAM WAISTCOAT	HALF CHEST		45.0	47.5	50.0	52.5	55.0	57.5	60.0	62.5							
	HALF HEM		42.5	45.0	47.5	50.0	52.5	55.0	57.5	60.0							

MENS LOUNGE SHIRTS

PRODUCT NAME	MEASUREMENT POSITION	XS	S	M	L	XL	2 XL	3 XL	4 XL	5 XL							
FREDERICK LOUNGE SHIRT	HALF CHEST		56.0	59.0	63.0	67.0	72.0	76.0	78.0	82.0							
	HALF WAIST 17cm BELOW ARM HOLE		54.0	57.0	61.0	65.0	69.0	74.0	76.0	80.0							
NIMROD LOUNGE SHIRT	HALF CHEST		56.0	59.0	63.0	67.0	72.0	76.0	78.0	82.0							
	HALF WAIST 17cm BELOW ARM HOLE		54.0	57.0	61.0	65.0	69.0	74.0	76.0	80.0							
PENN LOUNGE SHIRT	HALF CHEST		56.0	59.0	63.0	67.0	72.0	76.0	78.0	82.0							
	HALF WAIST 17cm BELOW ARM HOLE		54.0	57.0	61.0	65.0	69.0	74.0	76.0	80.0							

SIZING CHARTS

LADIES BLOUSES

PRODUCT NAME	MEASUREMENT POSITION	28	30	32	34	36	38	40	42	44	46	48	50	52	54	56	58	60
IVY BLOUSE	HALF CHEST				102.0	107.0	112.0	117.0	123.0	129.0	135.0	141.0	147.0	153.0	159.0			
	HALF WAIST				89.0	94.0	99.0	104.0	110.0	116.0	122.0	128.0	134.0	140.0	146.0			
IRIS BLOUSE	HALF CHEST				102.0	107.0	112.0	117.0	123.0	129.0	135.0	141.0	147.0	153.0	159.0			
	HALF WAIST				89.0	94.0	99.0	104.0	110.0	116.0	122.0	128.0	134.0	140.0	146.0			
ALICE BLOUSE	HALF CHEST	84.0	89.0	94.0	99.0	104.0	109.0	114.0	120.0	126.0								
	HALF WAIST	73.0	78.0	83.0	88.0	93.0	98.0	103.0	109.0	115.0								

MENS CASUAL JACKETS

PRODUCT NAME	MEASUREMENT POSITION	XS	S	M	L	XL	2 XL	3 XL	4 XL	5 XL	6 XL							
CHATSWORTH JACKET	HALF CHEST	46.5	51.5	56.5	61.5	64.0	66.5	69.0	71.5	74.0								
	HALF HEM	45.0	50.0	55.0	60.0	62.5	65.0	67.5	70.0	72.5								
CLIVE JACKET	HALF CHEST	44.0	48.0	52.0	56.0	60.0	64.0	68.0	72.0	76.0	80.0							
	HALF HEM	44.0	48.0	52.0	56.0	60.0	64.0	68.5	72.0	76.0	80.0							
COLIN BODYWARMER	HALF CHEST	43.5	47.5	51.5	55.5	59.5	63.5	67.5	71.5	75.5								
	HALF HEM	43.5	47.5	51.5	55.5	59.5	63.5	67.5	71.5	75.5								

MENS TROUSERS

PRODUCT NAME	MEASUREMENT POSITION	28	30	32	34	36	38	40	42	44	46	48	50	52	54	56	58	60
YORK TROUSER	HALF WAIST	36.5	39.0	41.5	44.5	47.0	49.5	52.0	54.5	57.0	59.5	62.0	64.5	67.0				
STANWICK TROUSER	HALF WAIST	36.5	39.0	41.5	44.5	47.0	49.5	52.0	54.5	57.0	59.5	62.0	64.5					
LINCOLN TROUSER	HALF WAIST	36.5	39.0	41.5	44.5	47.0	49.5	52.0	54.5	57.0	59.5	62.0	64.5	67.0	69.5			
ALDERTON TROUSER	HALF WAIST	36.5	39.0	41.5	44.5	47.0	49.5	52.0	54.5	57.0	59.5	62.0	64.5	67.0				
HARGREAVES TROUSER	HALF WAIST	36.5	39.0	41.5	44.5	47.0	49.5	52.0	54.5	57.0	59.5	62.0	64.5	67.0				
WENTWORTH TROUSER	HALF WAIST	36.5	39.0	41.5	44.5	47.0	49.5	52.0	54.5	57.0	59.5	62.0	64.5					

LADIES SLACKS

PRODUCT NAME	MEASUREMENT POSITION	28	30	32	34	36	38	40	42	44	46	48	50	52	54	56	58	60
LEONORA SLACKS	HALF WAIST	31.5	34.0	36.5	39.0	41.5	44.0	46.5	49.5	52.0								
CELIA SLACKS	HALF WAIST	36.0	37.0	38.0	39.0	41.0	43.0	45.0	47.0	50.5	54.0	56.5	59.0	61.5				
VIOLET SLACKS	HALF WAIST	32.0	34.5	37.0	39.5	42.0	44.5	47.0	50.0	53.0	56.0	59.0	62.0					

SIZING CHARTS

LADIES SKIRTS

PRODUCT NAME	MEASUREMENT POSITION	28	30	32	34	36	38	40	42	44	46	48	50	52	54	56	58	60
EDITH SKIRT	HALF WAIST	31.5	34.0	36.5	39.0	41.5	44.0	46.5	49.5	52.0								
HARRIET SKIRT	HALF WAIST				39.0	41.4	43.8	45.6	48.4	50.6	52.9	55.1	57.4	60.5				

MENS CHINOS

PRODUCT NAME	MEASUREMENT POSITION	28	30	32	34	36	38	40	42	44	46	48	50	52	54	56	58	60
ETON CHINO	HALF WAIST	36.5	39.0	41.5	44.5	47.0	49.5	52.0	54.5	57.0	59.5	62.0	64.5					
HARROW CHINO	HALF WAIST	36.5	39.0	41.5	44.5	47.0	49.5	52.0	54.5	57.0	59.5	62.0	64.5	67.0				

MENS DENIMS

PRODUCT NAME	MEASUREMENT POSITION	28	30	32	34	36	38	40	42	44	46	48	50	52	54	56	58	60
PERCY STRETCH DENIM	HALF WAIST	37.0	39.5	42.0	44.5	47.0	49.5	52.0	54.5	57.0	59.5	62.0	64.0					
COLT DENIM	HALF WAIST	36.5	39.0	41.5	44.0	46.5	49.0	51.5	54.0	56.0	58.5	61.0						

LADIES DENIMS

PRODUCT NAME	MEASUREMENT POSITION	28	30	32	34	36	38	40	42	44	46	48	50	52	54	56	58	60
DARLENE STRETCH DENIM	HALF WAIST	31.5	34.0	36.5	39.0	42.0	45.0	48.0	51.0	54.0	57.0	60.0						